

THE UNIVERSE
YOURS TO DISCOVER



INTERNATIONAL YEAR OF
ASTRONOMY
2009

ASTRONOMY 2009

MARK WALKER

(MANLY ASTROPHYSICS)

OVERVIEW

* OUR PLACE IN THE UNIVERSE

* ASTRONOMERS AT WORK

* CURRENT ACTIVITIES

* SCIENCE

* TECHNOLOGY

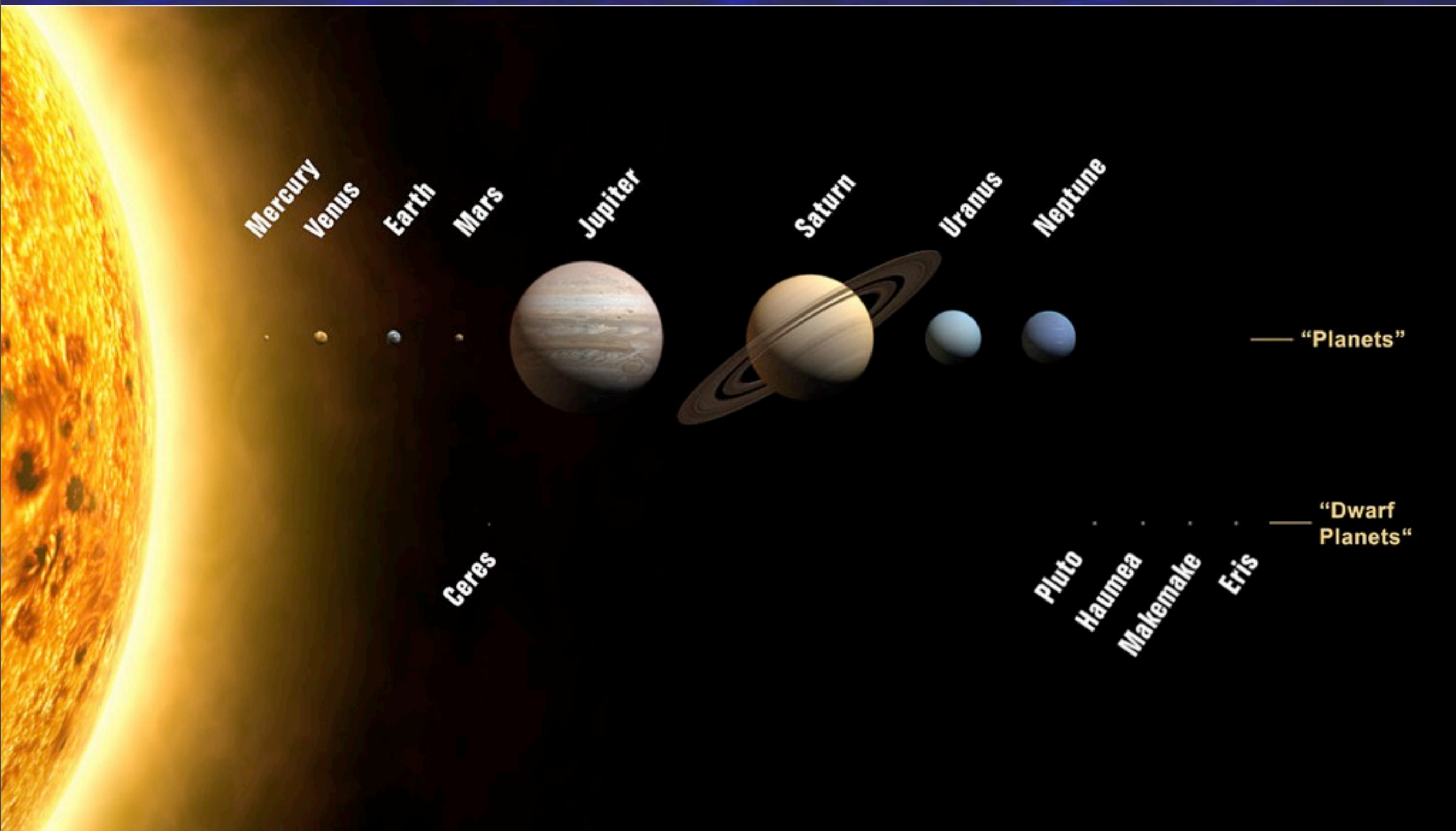
ASTRONOMY, NOT ASTROLOGY!

ASTRONOMY IS SCIENCE

ASTROLOGY IS SUPERSTITION

ORIENTATION:

SOLAR SYSTEM



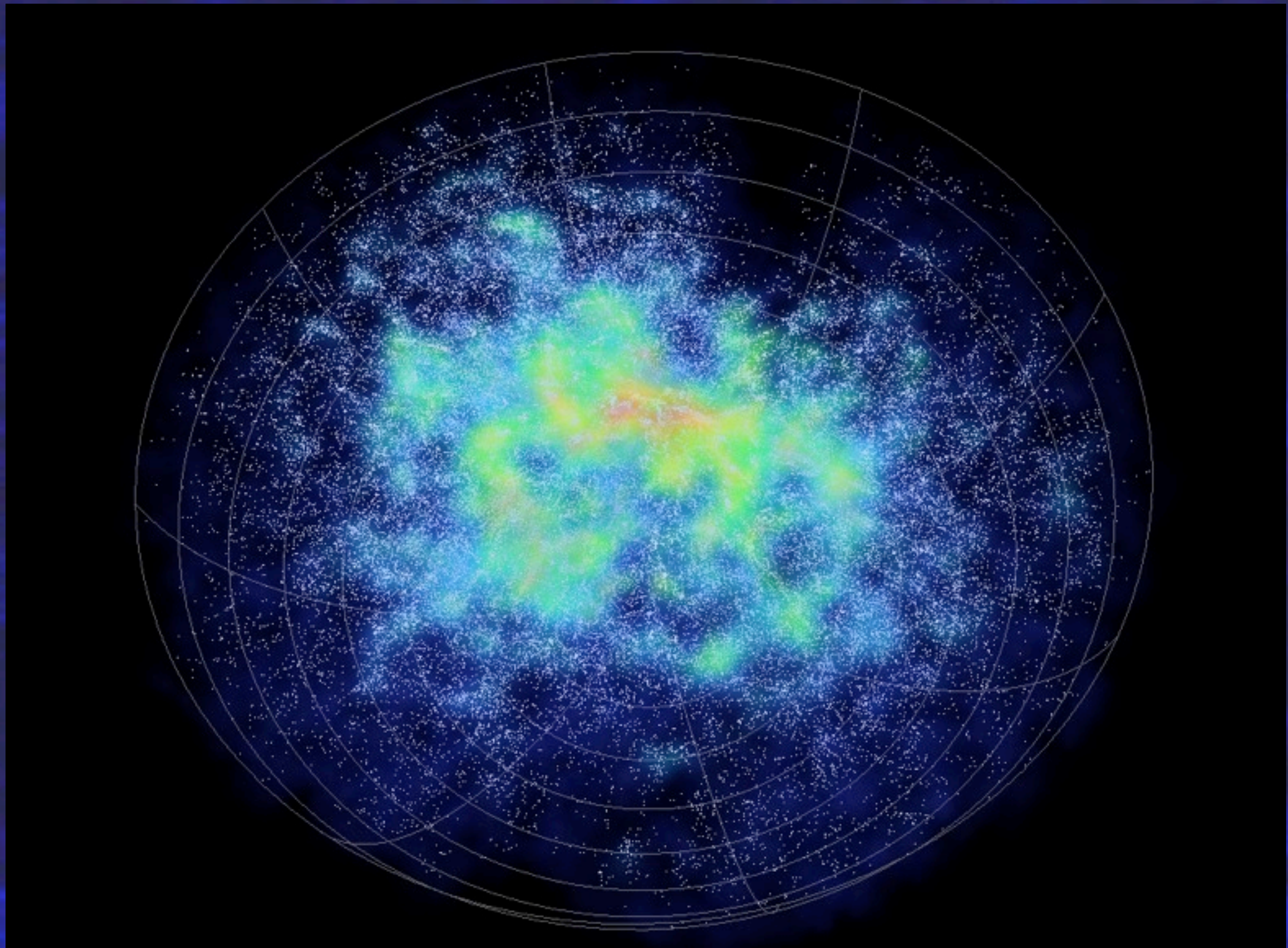
ORIENTATION:

MILKY WAY (GALAXY)



ORIENTATION:

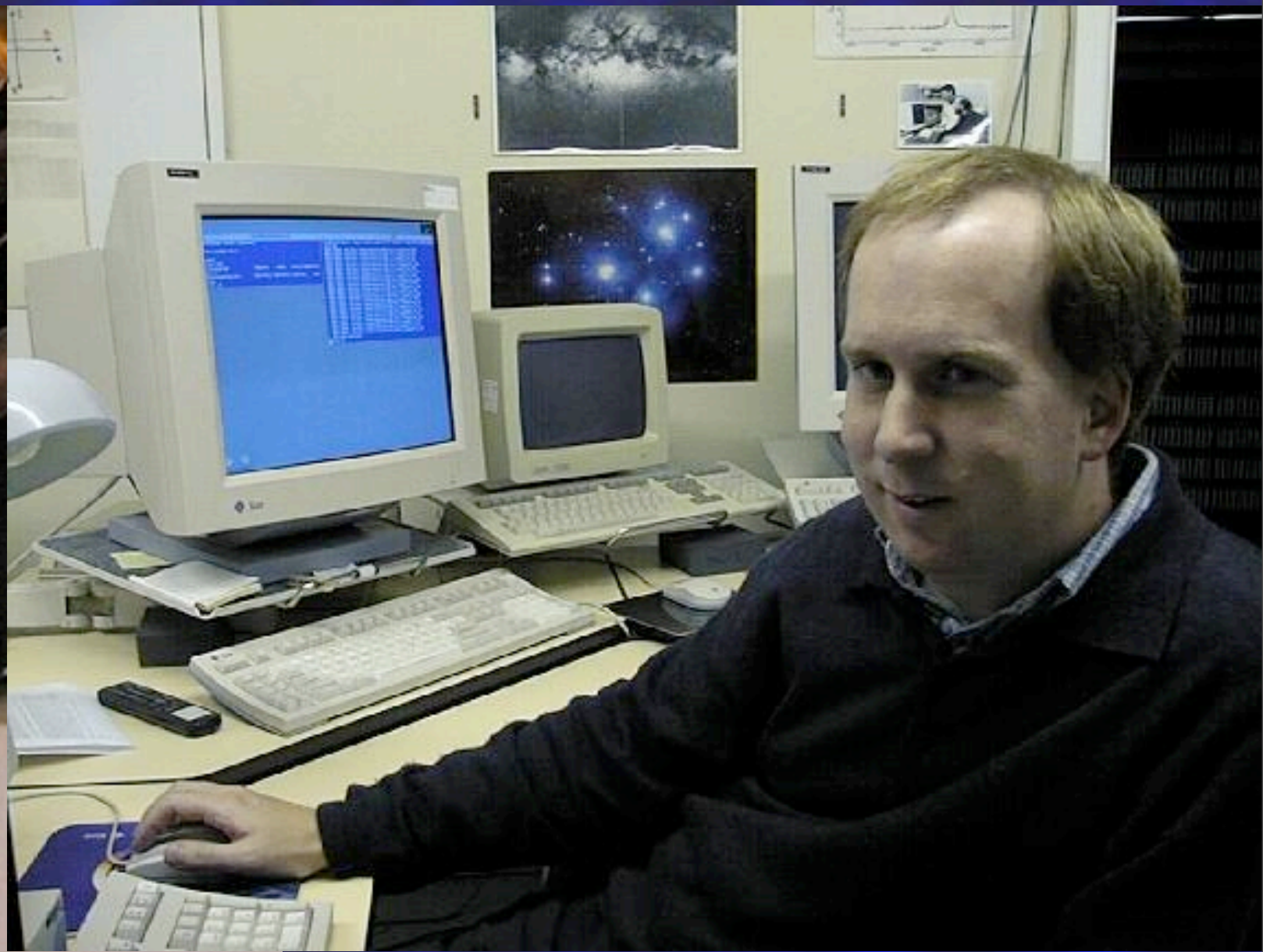
THE UNIVERSE



THE JOB

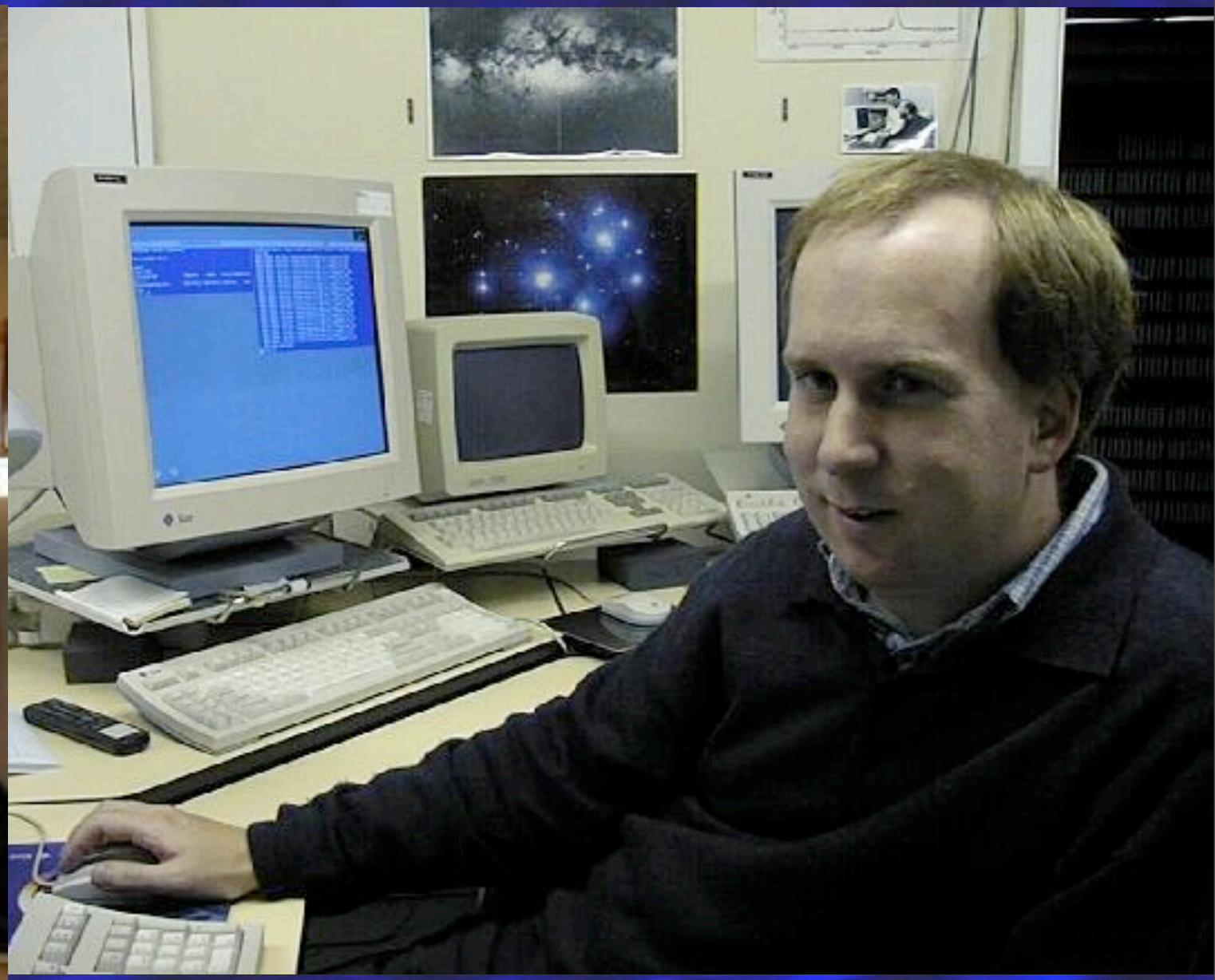
NOT MUCH OF THIS

BUT A LOT OF THIS



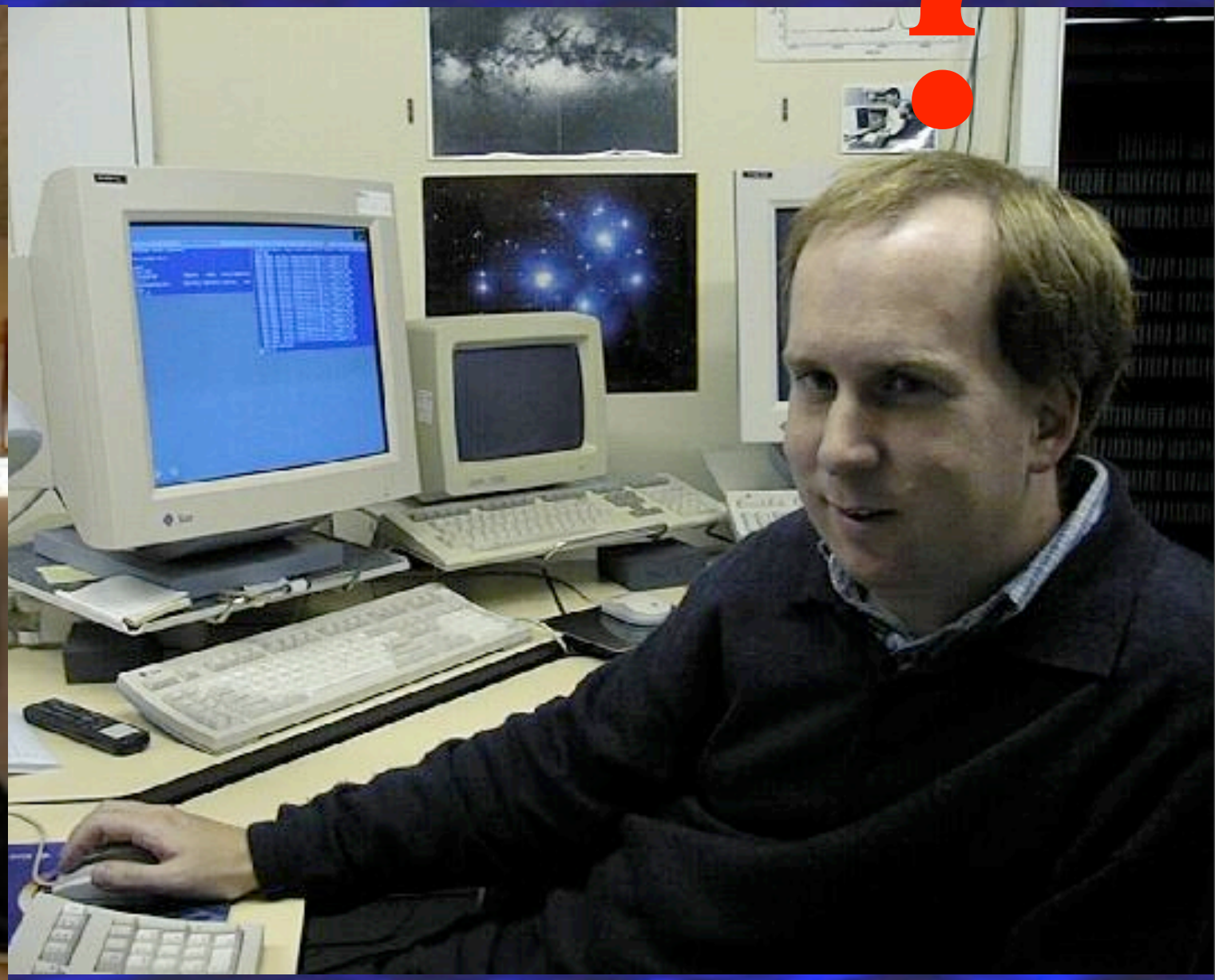
THE JOB

AND EVEN MORE OF THIS !

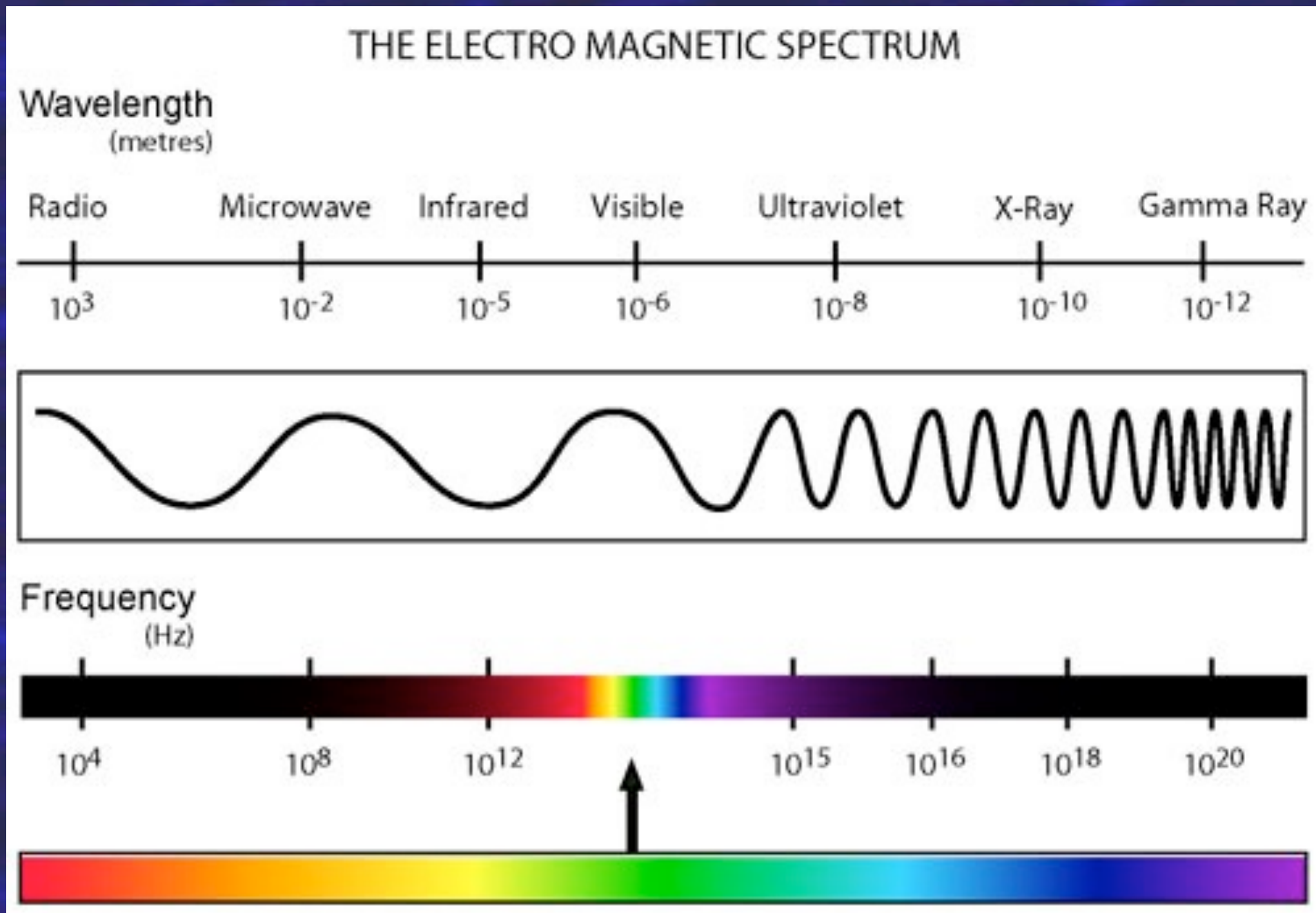


THE JOB

AND EVEN MORE OF THIS !



ACROSS THE SPECTRUM



ACROSS THE SPECTRUM



“SOMBRERO” GALAXY



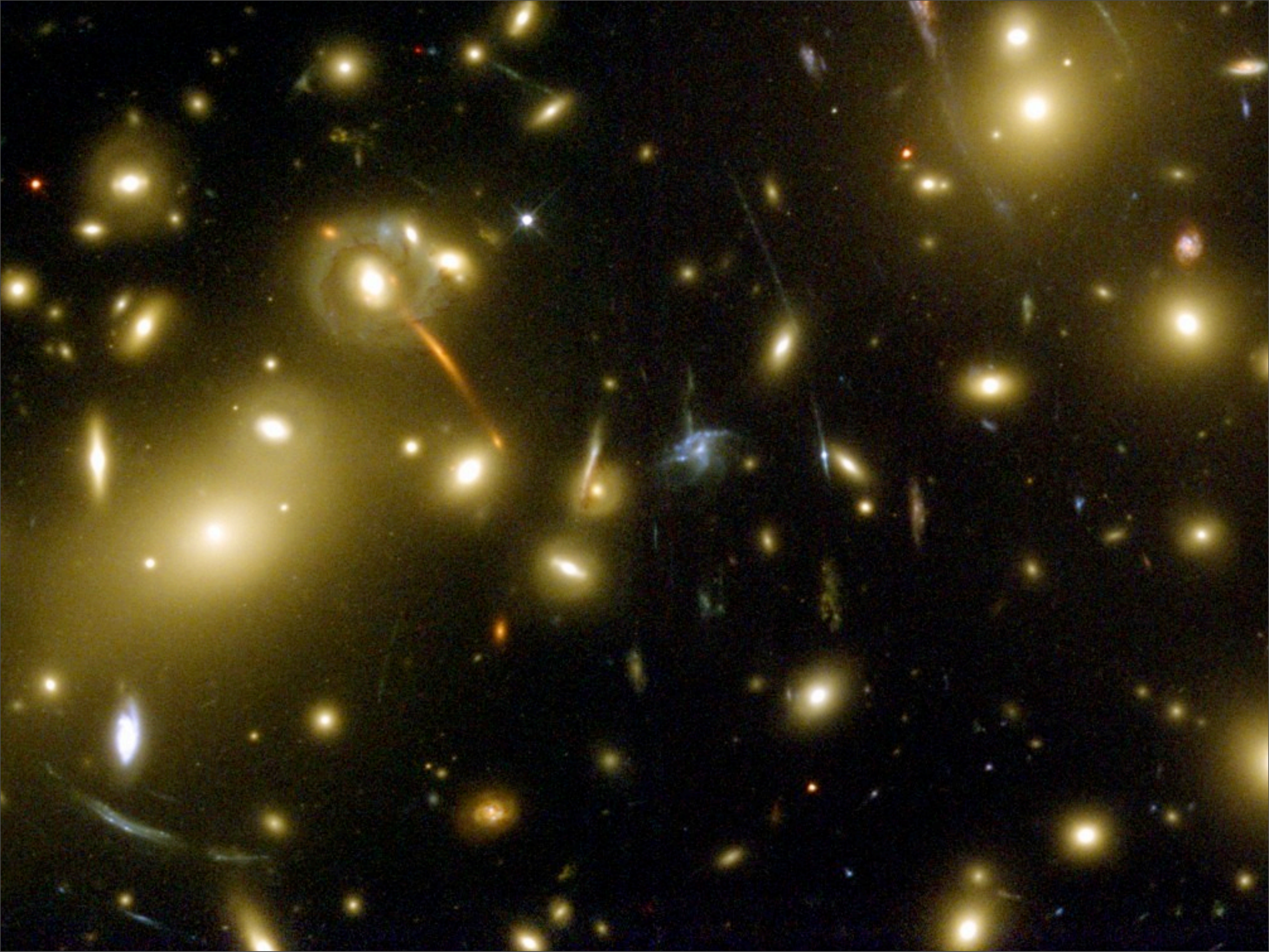
OPTICAL



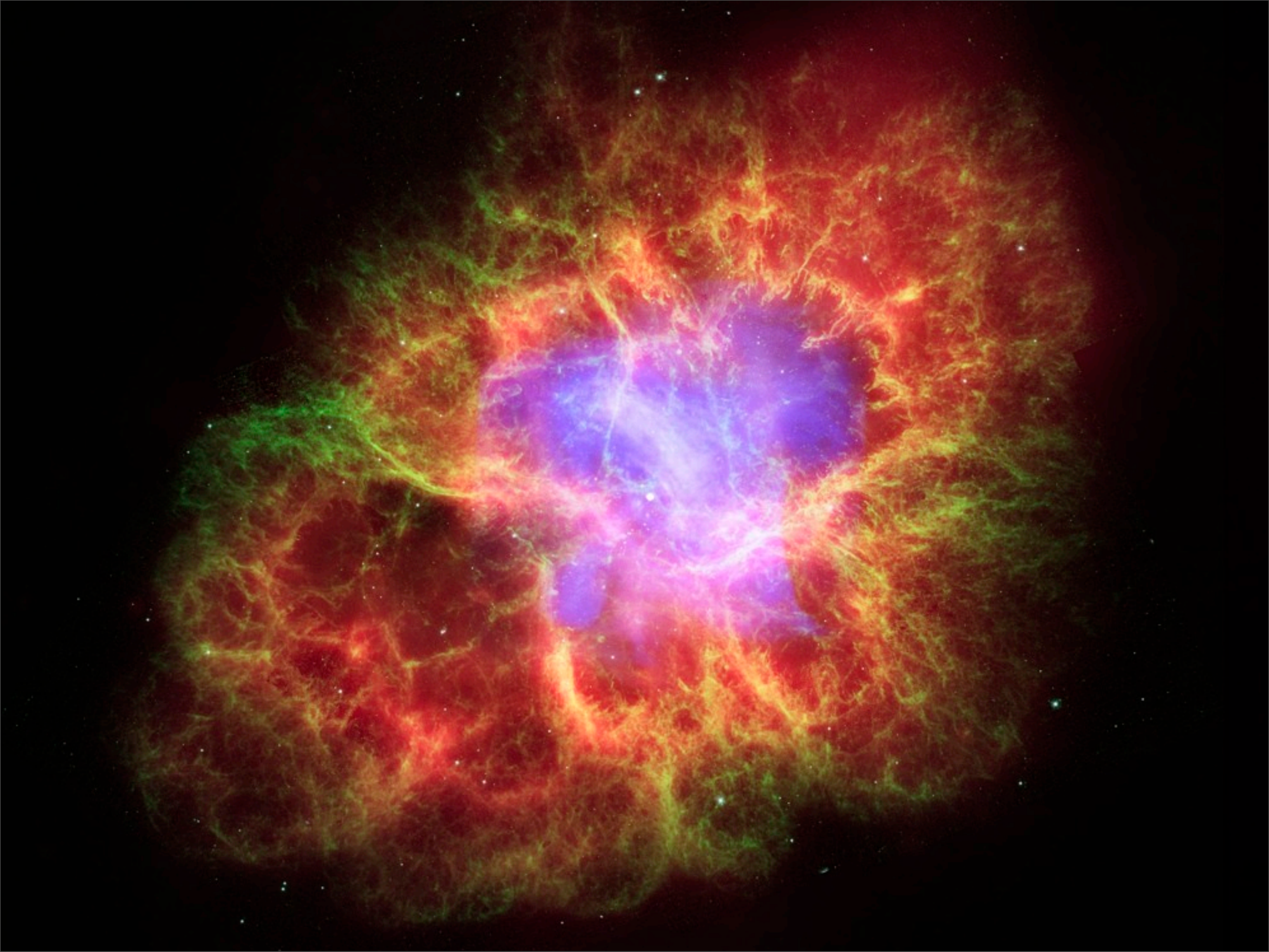
INFRARED

WHAT SORT OF THINGS DO WE STUDY ?









CURRENT ISSUES

- * ARE EARTH-LIKE PLANETS COMMON ?
- * IS THERE EXTRA-TERRESTRIAL LIFE ?
- * WHY IS THE UNIVERSE ACCELERATING ?
- * IS THERE A DARK ENERGY ?
- * HOW DID GALAXIES FORM ?
- * WHAT IS THE DARK MATTER ?

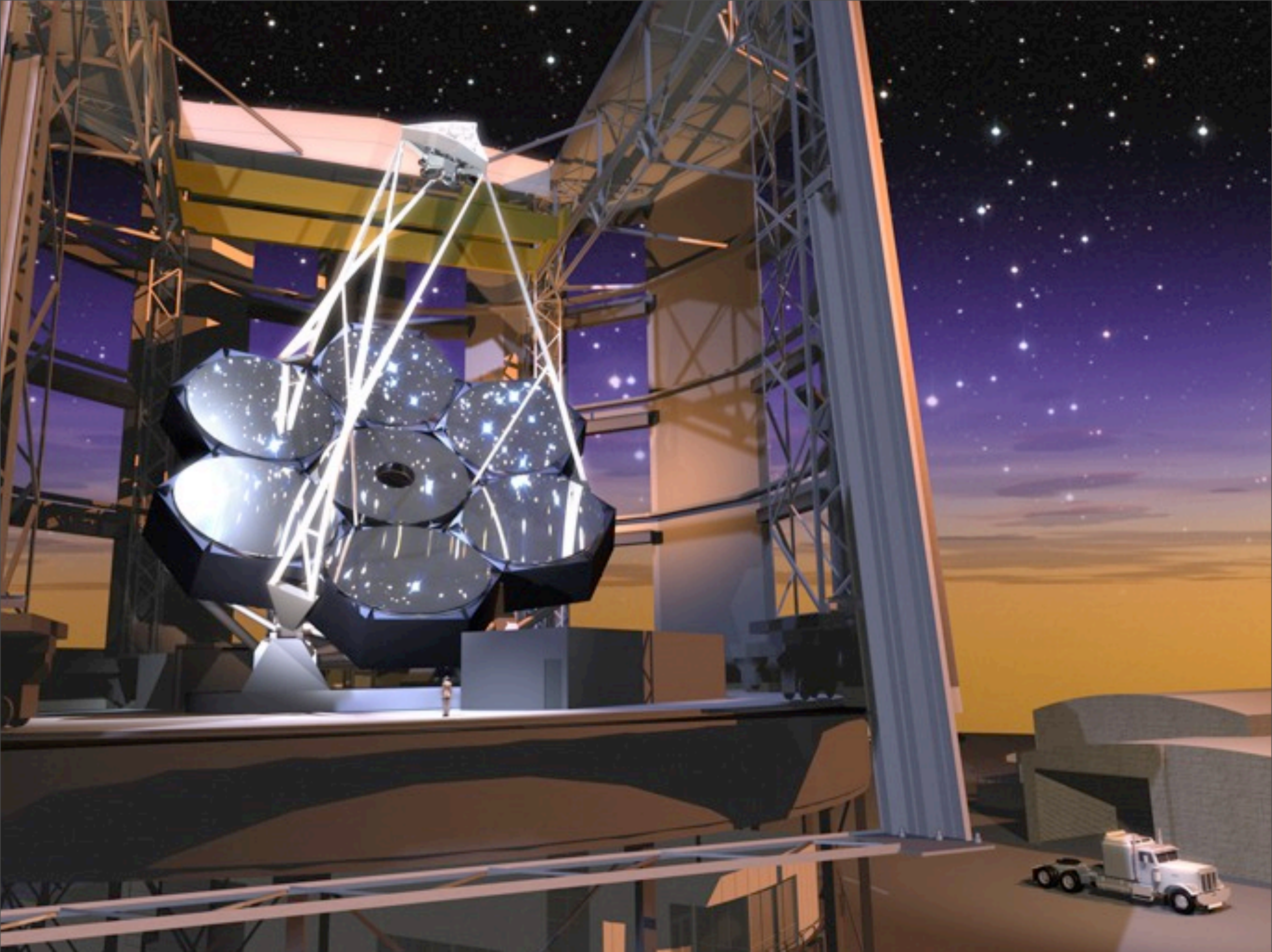
EMERGING TECHNOLOGIES

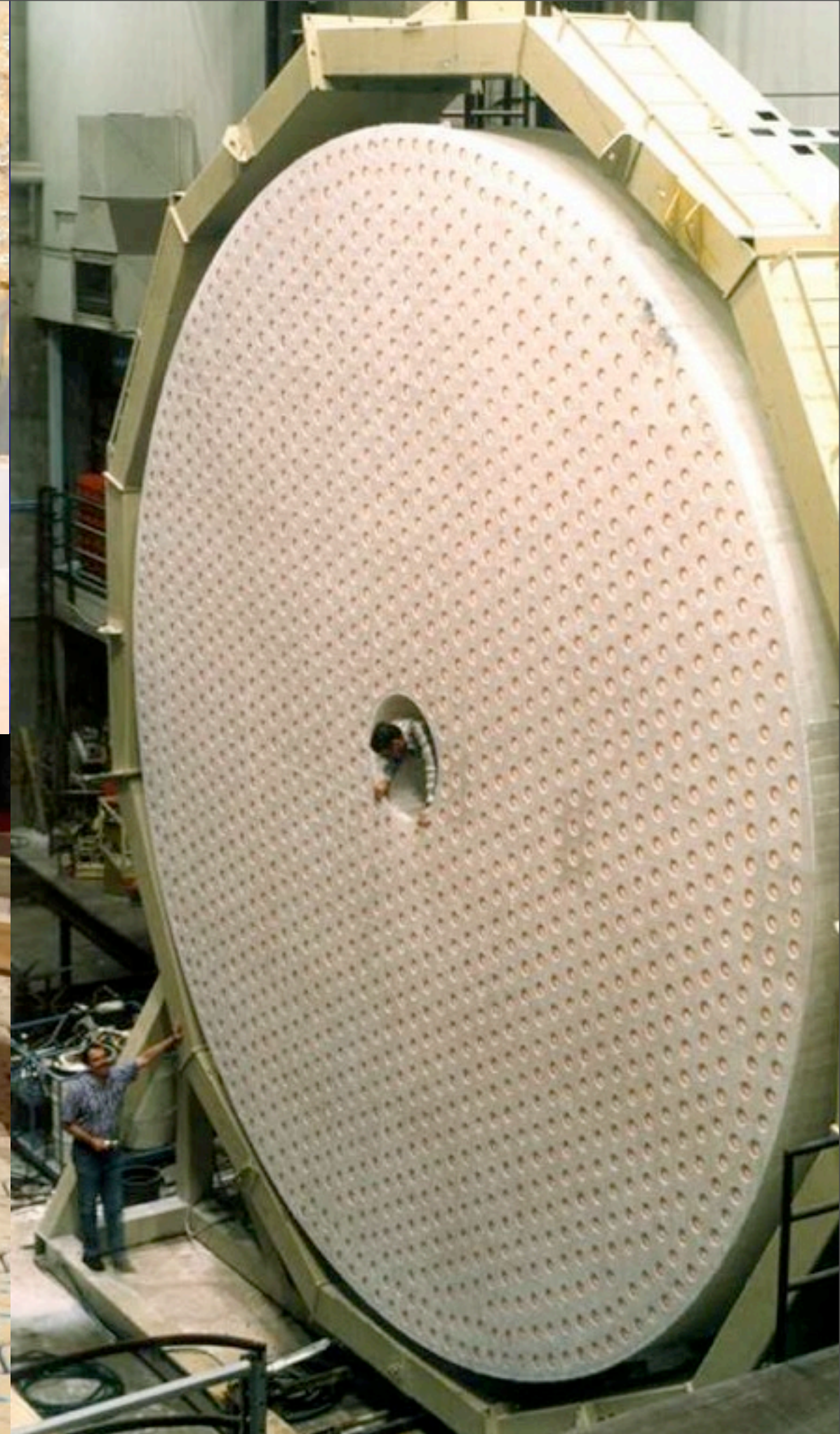
1. OPTICAL

2. RADIO



Tuesday, 28 February 2012







AUSTRALIA TELESCOPE COMPACT ARRAY (NARRABRI)



SQUARE KILOMETRE ARRAY



SQUARE KILOMETRE ARRAY



SQUARE KILOMETRE ARRAY



Further information



www.skatelescope.org